

CERTIFICATE OF LOCATION OF GOVERNMENT CORNER

South 1/4 Corner of Section 22, Township 106N, Range 41W, 5th P.M.

STATE OF MINNESOTA, County of Murray

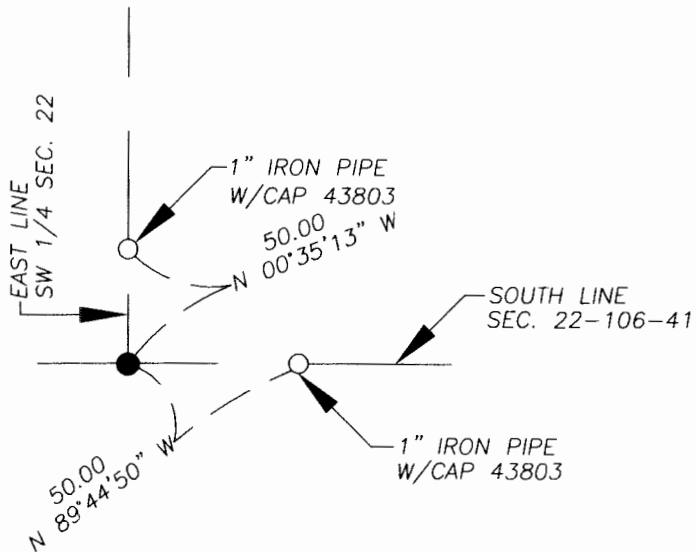
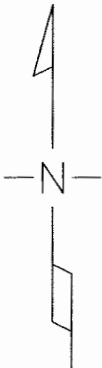
At the corner location shown on the sketch

On 11/14/05 found a pointed stone 15" deep on east side of old wood corner post.
(15" high, 10" base & 4" top)

left monument as found lowered monument, removed monument (explain)

On _____ placed a _____

SKETCH OF REFERENCE TIES



MURRAY CO. COORDINATES
 NAD 83 (1996 ADJ.)
 142318.94N
 503517.09E

I hereby certify that this document and the data contained herein was prepared by me or under my direct supervision.

Dennis Ray Esplan 12/13/05
 SIGNATURE DATE

MN. LICENSE NO. 43803

- Land Surveyor, Professional Engineer
 County Surveyor, County Engineer

OFFICE OF THE COUNTY RECORDER

I hereby certify that this document was filed in the Co. Recorder's Office at _____ on the

_____ day of DEC 14 2005

County Recorder James V. Johnson
 By _____, Deputy

DOCUMENT NO. _____

Statement of Evidence

Original Township Subdivision was surveyed by L.G.M. Fletcher in 1861.

Murray Co. Hwy. Dept. had no history of this corner.

November 2005

Dennis Esplan PLS and Kari Esplan with Zieske Land Surveying, Inc. found a very old wood corner post that had rotted below ground surface. Dug around the wood corner post and found ± 4 " round stone on east side of corner post, removed smaller stones and found a pointed stone measuring ± 15 " vertical, 10" at its base and a ± 4 " rounded top.

Although there were several stones in this vicinity, I consider the combination of the wood corner post and the pointed stone as being the best evidence of the corner.

